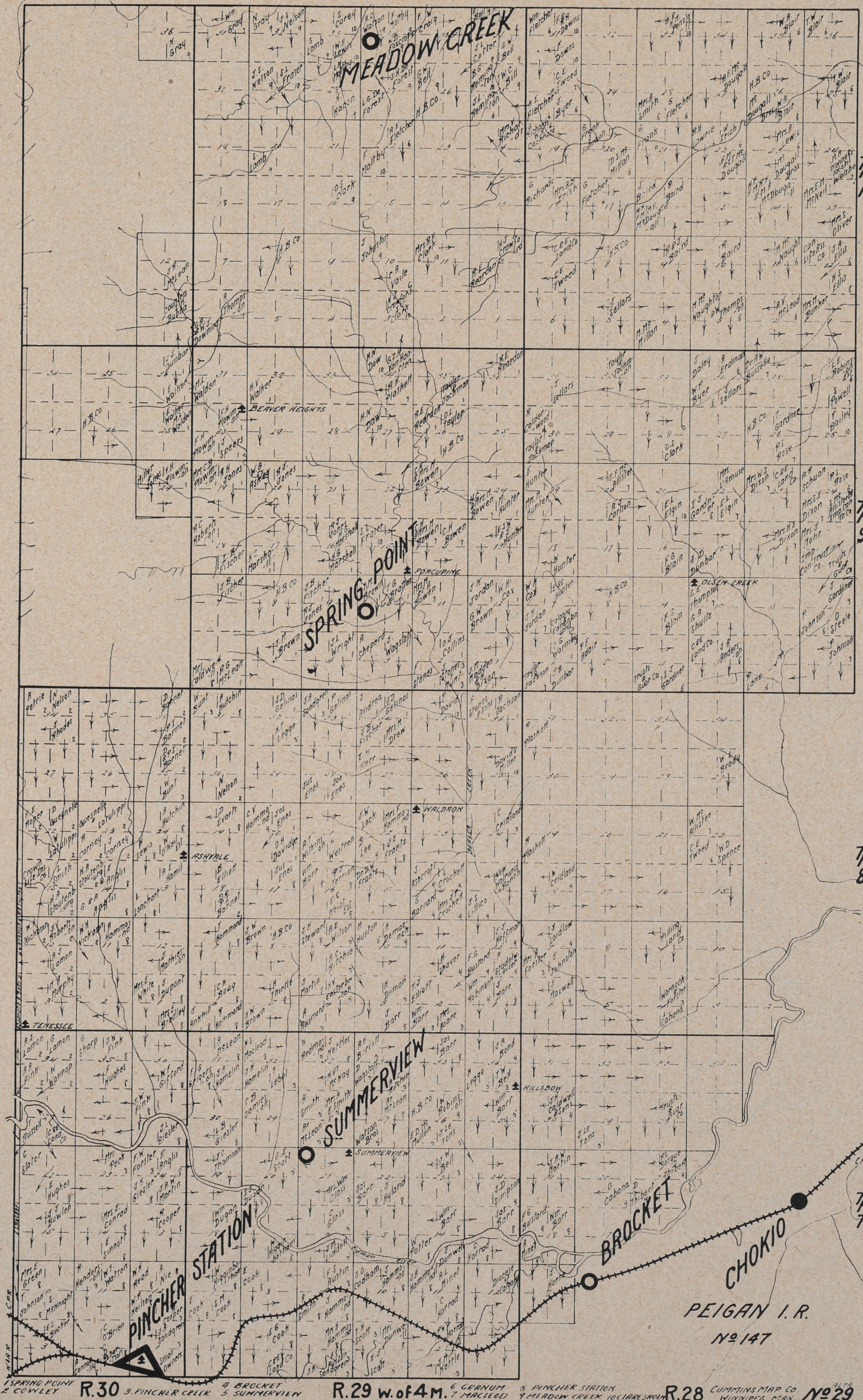


We have these maps for any part of Manitoba, Saskatchewan and Alberta. Also mailing lists of all kinds. Write us for map making, mounting, draughting, etc.

Price \$1.00 Paper Copy

Price \$1.50 Cloth backed Copy. (Any number of Maps can be mounted in one piece making one large map.)



R.30 3. PINCHER CREEK 5 SUMMERVIEW R.29 w. of 4 M. 6 GRANUM 8 PINCHER STATION R.28 CUMMINS MAP CO. WINNIPEG, MAN. No. 29

LEGEND: Schools Cities Towns Villages Post Offices Sidings
Number below owners name refers to Post Office address, which follows same number at bottom of Map